

Module Retainer / Edge Guard

M008.0

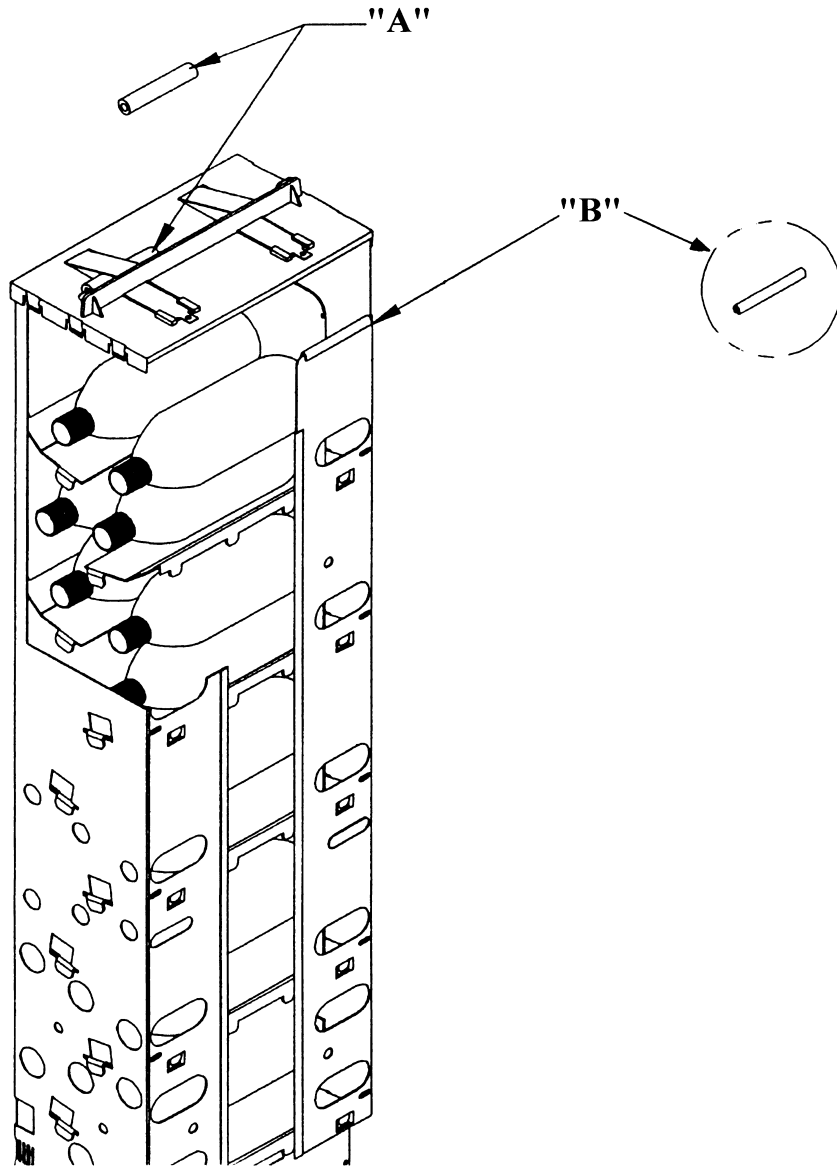


Figure 1

Module Retainer (A) 801,809,580.01

To Install:

1. Install one module retainer per module.
2. Lift the spring tab and place the module retainer under it so the retainer lays across the rectangular hole in the top cap and up against the top slide. See "A", figure 1.

Edge Guard (B) 801,809,570.01

To Install:

1. Install two edge guards on each module.
2. Place the edge guard on the module edge where product is loaded. This will protect hands and product from rough edges.